

Onshoring the Graphite Supply Chain for Lithium-ion Batteries



SCALING INNOVATION: Investment Opportunity

Building our Demonstration Plant

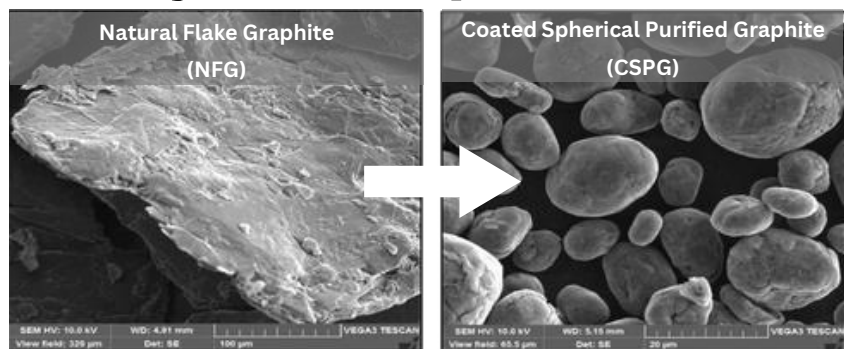
Join us as we take the next step in commercializing our breakthrough patented process to produce coated spherical purified graphite (CSPG) for Lithium-ion batteries. Cost-effective domestic manufacturing with a reduced carbon footprint will eliminate reliance on foreign supply.

We are seeking investment to fund our Demo Plant which will further validate our technology at a pre-commercial scale following our successful pilot-scale phase.

Funding Details

- **Funding Round**
Open now - Target close June 2025
- **Investment Target**
CA\$ 15 million
- **Use of Funds**
Demo Plant engineering, construction and operation
- **Shape the Future!**
High growth opportunity with experienced team

Battery-Grade Graphite



Confirmed for LFP and NMC batteries using natural flake graphite from two different mines. Results obtained using third-party battery testing laboratories and compared to commercial graphite reference materials.

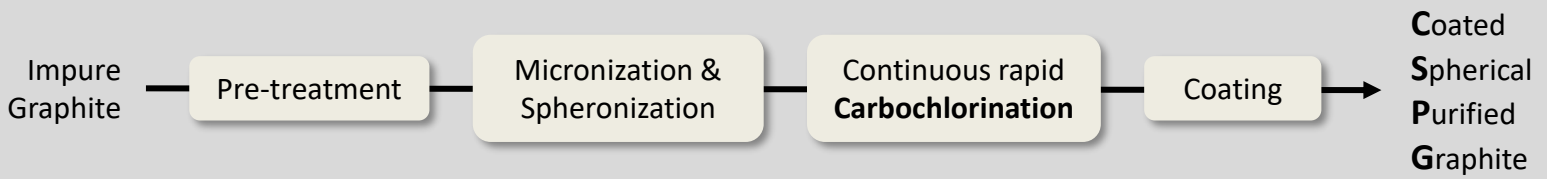
Company

Founded in 2021 and headquartered in Montreal. Patented technology. Team with 500+ years of experience in metallurgy, engineering & capital projects.



GraphPure™ 
 (for Natural Flake Graphite)

GraphRenew™ 
 (for Graphite recovered from battery recycling Black Mass)



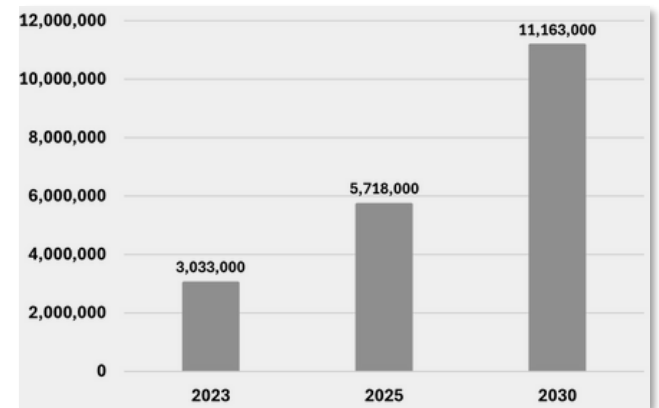
Why Invest?

- **Proven Technology**
 Successfully tested at pilot scale
- **Market-Driven Opportunity**
 Addressing a critical industry need with massive looming supply gap (> 95% produced in China)
- **Scalable Business Model**
 Technology Operator and Licensor with clear path from Demo to commercial-scale (20 ktpa CSPG) modules
- **Strong IP Portfolio and Team**
 Providing a unique competitive advantage

One GraphPure™ 20 ktpa CSPG plant represents a carbon reduction of 100,000 tpa CO₂eq compared to dominant Hydrofluoric Acid (HF) plants used in China.

Graphite Demand (t)

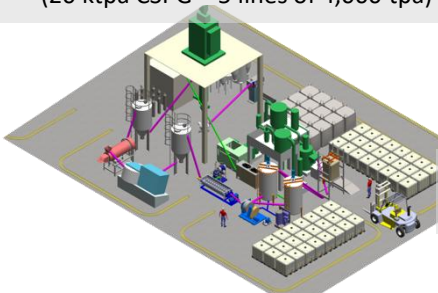
Strong projected demand growth being driven by electrification of transportation (EVs) and battery energy storage systems (BESSs). Graphite is used in the anode of all types of Li-ion batteries used in these applications.



Source: Benchmark Mineral Intelligence, December 2024

Scale-up

- ☐ **2023-2025: Phase 1 - Pilot Plant**
 (10 kg batches)
- ☐ **2025-2026: Phase 2A - Demo Plant**
 (40 tpa CSPG)
- ☐ **2027-2028: Phase 2B - Demo Plant**
 (400 tpa CSPG)
- ☐ **2029 - Phase 3 - Commercial Plant**
 (20 ktpa CSPG - 5 lines of 4,000 tpa)



First commercial plant will service North America. Diversified revenues expected from licensing commercial plants globally.

Strong Support

Strong support has been received from governments, funding agencies, cleantech sector and industry:

CA\$ 12.4M raised to date, with CA\$ 8.8M non-dilutive

Collaborations have been leveraged across the graphite value chain, including graphite mining companies and Li-ion battery recyclers (MOUs in place with industry partners, and 9 Letters of Support received from battery recyclers), translating to long-term supply agreements.



Head Office
 407 rue McGill, Suite 704
 Montreal QC H2Y 2G3
Operations
 Montreal QC & Kingston ON

For more information:
Gillian Holcroft, P.Eng, M.Eng.
Co-founder & CEO
 Gillian@GreenGraphiteTech.com
 +1 (514) 928-6512

