

Onshoring the Graphite Supply Chain for Lithium-ion Batteries



SCALING INNOVATION:

Investment Opportunity

Building our Demonstration Plant

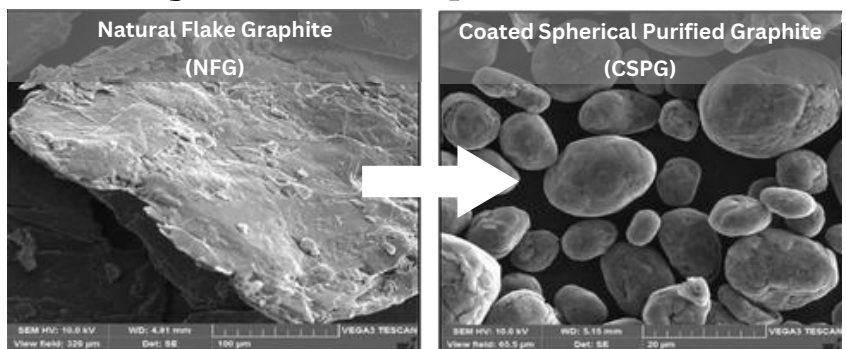
Join us as we take the next step in commercializing our breakthrough patented technology to produce coated spherical purified graphite (**CSPG**) for Lithium-ion batteries. Cost-effective domestic manufacturing with a reduced carbon footprint will eliminate reliance on foreign supply.

With our technology proven at the pilot scale, we are seeking investment to fund our Demo Plant which will further validate our technology at a pre-commercial scale.

Funding Details

- **Funding Round**
Open now - Target close Q4 2025
- **Investment Target**
US\$ 7 million (CA\$ 10 million)
- **Use of Funds**
Demo Plant engineering, construction and operation
- **Shape the Future!**
High growth opportunity with experienced team

Battery-Grade Graphite

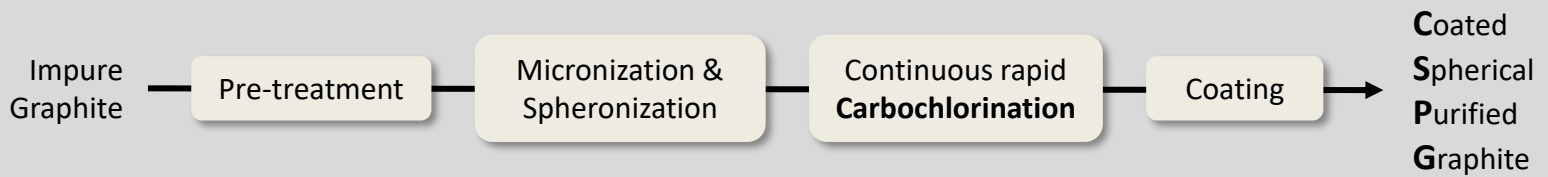


Confirmed for LFP and NMC batteries using natural flake graphite from two different mines. Results obtained using third-party battery testing laboratories and compared to commercial graphite reference materials.

Company

Founded in 2021 and headquartered in Montreal, Québec with operations in Kingston, Ontario. Team with 400+ years of experience in metallurgy, engineering & capital projects.





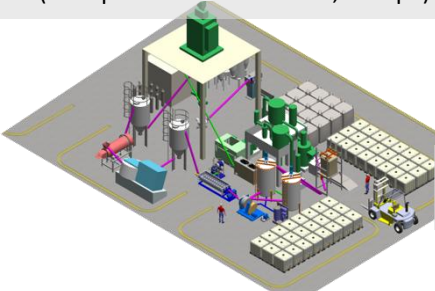
Why Invest?

- **Proven Technology**
Successfully tested at pilot scale
- **Market-Driven Opportunity**
Addressing a critical industry need with massive looming supply gap (> 95% produced in China)
- **Scalable Business Model**
Operator and Licensor with clear path from Demo to commercial-scale (20 ktpa CSPG) modules
- **Strong IP Portfolio and Team**
Providing a unique competitive advantage

One GraphPure™ 20 ktpa CSPG plant represents a GHG reduction of 82,700 tonnes CO₂eq/year, as compared to dominant Hydrofluoric Acid (HF) plants used in China.

Scale-up

- ❑ **2023-2025: Phase 1 - Pilot Plant**
(10 kg batches)
- ❑ **2025-2026: Phase 2A - Demo Plant**
(40 tpa CSPG)
- ❑ **2027-2028: Phase 2B - Demo Plant**
(400 tpa CSPG)
- ❑ **2029 – Phase 3 – Commercial Plant**
(20 ktpa CSPG – 5 lines of 4,000 tpa)



Strong Support

Strong support has been received from governments, funding agencies, cleantech sector and industry:

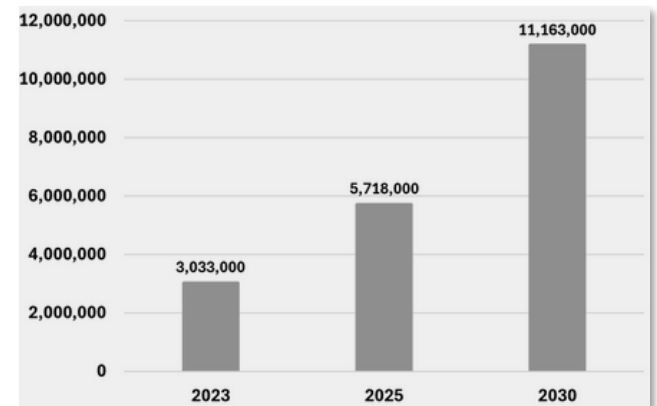
US\$8.9M raised to date, with US\$6.4M non-dilutive

Collaborations have been leveraged across the graphite value chain, including graphite mining companies and Li-ion battery recyclers (MOUs in place with industry partners, and 9 Letters of Support received from battery recyclers), translating to long-term supply agreements.

First commercial plant will service North America. Diversified revenues expected from licensing commercial plants globally.

Graphite Demand (t)

Strong projected demand growth being driven by electrification of transportation (EVs) and battery energy storage systems (BESSs). Graphite is used as the anode for all Li-ion battery chemistries.



Source: Benchmark Mineral Intelligence, December 2024

